

Visit all of the fall 2015 locations:

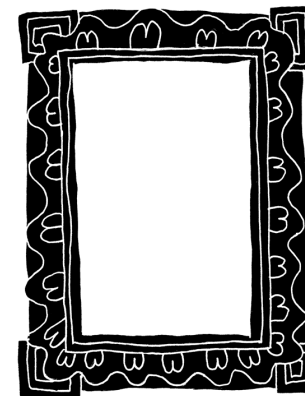
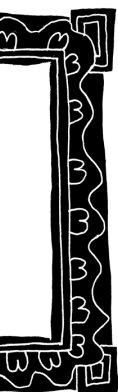
Fishtown
Ambler
Norristown
Wayne
West Chester

Philadelphia Museum of Art
2600 Benjamin Franklin Parkway
Philadelphia, PA 19130

Through scholarly study and creative play, the Philadelphia Museum of Art
inspires people to discover the spirit of imagination that lies within.

InsideOut

West Chester
Fall 2015



Join the Conversation



philamuseum.org/insideout
[#artinsideout](https://twitter.com/artinsideout)

Art in Unexpected Places

Free admission weekend for **Inside Out** community residents on
October 16–18. Check the website for details.

Inside Out is generously supported by the John S. and James L. Knight Foundation.

Special thanks to H&G Sign Co. and Krain Outdoor Advertising for providing assistance with artwork reproductions, offering access throughout Philadelphia.

Illustrations by Ana Benaroya. All artwork in this brochure are details from the collection of the Philadelphia Museum of Art unless otherwise noted. 1: Purchased with funds contributed by Marion Boulton Stroud, 2006-149-1; 2: Gift of Mrs. Thomas Eakins and Miss Mary Adeline Williams, 1929-184-28; 3: 125th Anniversary Acquisition. Gift of the McNeil Americana Collection, 2004-115-2; 4: John G. Johnson Collection, cat. 1051; 5: Gift of Henry F. du Pont and Mrs. John Wintersteen, 1959-102-1; 6: Andrew Wyeth; 7: Gift of Sarah Pennell Barton and Nancy Barton Barclay, 1975-5-1; 8: Gift of the McNeil Americana Collection, 2010-70-3; 9: Gift of Mrs. Moncure Biddle in memory of her father, Ernest F. Fenollosa, 1940-41-1; 10: The John Howard McFadden Collection, M1928-1-2; 11: The Louise and Walter Arensberg Collection, 1950-134-103; 12: The Louise and Walter Arensberg Collection, 1950-134-112 © 2015 Artists Rights Society (ARS) New York; 13: Gift of Mrs. H. Gates Lloyd, 1966-57-1-4 © 2015 The Andy Warhol Foundation for the Visual Arts, Inc./Artists Rights Society (ARS), New York; 14: The George W. Elkins Collection, E1924-4-15.

0815-8019

KF Knight Foundation

Philadelphia
Museum of Art

Philadelphia
Museum of
Art

InsideOut

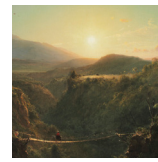
Inside Out brings high-quality replicas of artworks from the Museum's collection to neighborhoods throughout the region.



1 Moe Brooker



2 Thomas Eakins



3 Frederic Edwin Church



4 Claude Monet



5 Andrew Newell Wyeth

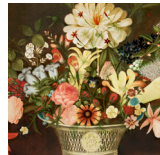


6 Rebecca Scattergood Savery

- 1 **Melton Arts & Education Center**
500 E. Market St.
Present Futures, 2006, by Moe Brooker
- 2 **Borough of West Chester Municipal Building**
401 E. Gay St.
Sailboats Racing on the Delaware, 1874, by Thomas Eakins
- 3 **Marshall Square Park**
200 E. Marshall St.
Pichincha, 1867, by Frederic Edwin Church
- 4 **The Hickman**
400 N. Walnut St.
Manne-Porte, Étretat by Claude Monet
- 5 **West Chester Public Library**
415 N. Church St.
Groundhog Day, 1959, by Andrew Newell Wyeth
- 6 **Uptown! Entertainment Alliance/Former Armory**
226 N. High St.
Sunburst Quilt, 1839, by Rebecca Scattergood Savery
- 7 **E. Gay & N. Matlack Sts.**
E. Gay & N. Matlack Sts.
From Nature in the Garden, 1856, by Rubens Peale
- 8 **Wells Fargo Bank**
N. High & E. Gay Sts.
Two Dragons [in Clouds], 1885, by Kano Hōgai
- 9 **Borough of West Chester Municipal Building**
401 E. Gay St. (On the opposite side of #2)
Sketch for "A Boat Passing a Lock," 1822–24, by John Constable
- 10 **N. Church & W. Gay Sts.**
N. Church & W. Gay Sts.
Little Painting with Yellow (Improvisation), 1914, by Vasily Kandinsky
Fish Magic, 1925, by Paul Klee
- 11 **West Chester University – Emilie K. Asplundh Concert Hall**
700 S. High St.
Jackie (Four Jackies) (Portraits of Mrs. Jacqueline Kennedy), 1964, by Andy Warhol
- 12 **West Chester Transportation Center**
220 W. Market St.
The Life Line, 1884, by Winslow Homer



7 Rubens Peale



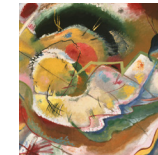
8 Kano Hōgai



John
9 Constable



Vasily
10 Kandinsky



10 Paul Klee



11 Andy Warhol



Winslow
12 Homer

