

Visit all of the **Fall 2016** locations

Brewerytown, Philadelphia

Historic Bristol Borough, PA

Conshohocken, PA

Jenkintown, PA

Phoenixville, PA

Upper Darby, PA

Philadelphia Museum of Art
2600 Benjamin Franklin Parkway
Philadelphia, PA 19130

Inside Out brings full-scale, high-quality replicas of works from the Museum's collection into communities in and around Philadelphia. Since the project began in 2015, the Museum has placed masterpieces in 260 locations throughout 22 communities, inspiring surprising and spontaneous interactions with art in unexpected places.

Inside**Out**

Jenkintown

Fall 2016



Join the Conversation



philamuseum.org/insideout
[#artinsideout](https://twitter.com/artinsideout)

Illustrations by Stephen Powers. All details of artwork shown here are from the collection of the Philadelphia Museum of Art. 1: The George W. Elkins Collection, E1924-4-1; 2: 125th Anniversary Acquisition. Purchased with funds contributed by The Daniel W. Dietrich Foundation in memory of Joseph C. Bailey and with a grant from The Judith Rothschild Foundation, 1998-3-1; 3: John G. Johnson Collection, cat. 1051; 4: The John Howard McFadden Collection, M1928-1-41; 5: The Louise and Walter Arensberg Collection, 1950-134-103; 6: The Louise and Walter Arensberg Collection, 1950-134-112 © 2016 Artists Rights Society (ARS) New York; 7: Gift of the Philadelphia Chapter, National Home Fashions League, Inc., 1970-86-3; 8: The Philip S. Collins Collection, gift of Mrs. Philip S. Collins in memory of her husband, 1945-65-22; 9: Gift of Miss Ettie Stetheimer, 1951-27-1; 10: The Henry P. McIlhenny Collection in memory of Frances P. McIlhenny, 1986-26-32; 11: The William L. Elkins Collection, E1924-3-54; 12: The John Howard McFadden Collection, M1928-1-2.

Free admission weekend for *Inside Out* community residents, Sept. 16–18. Check the website for details.

Inside Out is generously supported by the John S. and James L. Knight Foundation.

Special thanks to H&G Sign Co. and Krain Outdoor Advertising for providing assistance with artwork reproductions, offering access throughout Philadelphia.

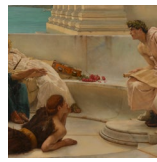
KF Knight Foundation

Philadelphia Museum of **Art**

Philadelphia Museum of **Art**

Jenkintown

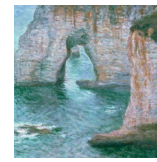
Fall 2016



1 Sir Lawrence Alma-Tadema



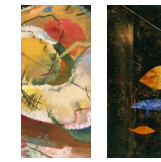
2 Beauford Delaney



3 Claude Monet



4 Joseph Mallord William Turner



5 Vasily Kandinsky & Paul Klee

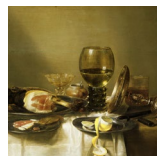


6 Rudolf Staffel

- 1 **Jenkintown School District**
325 Highland Ave.
A Reading from Homer, 1885, by Sir Lawrence Alma-Tadema
- 2 **Salem Baptist Church**
610 Summit Ave.
Portrait of James Baldwin, 1945, by Beauford Delaney
- 3 **Jenkintown Borough Office**
700 Summit Ave.
Manne-Porte, Étretat, 1885, by Claude Monet
- 4 **Pioneer Fire Company**
700 Greenwood Ave.
The Burning of the Houses of Lords and Commons, October 16, 1834, 1834–35, by Joseph Mallord William Turner
- 5 **Jenkintown Town Square**
Leedom St. & Greenwood Ave.
Little Painting with Yellow (Improvisation), 1914, by Vasily Kandinsky; *Fish Magic*, 1925, by Paul Klee
- 6 **This Little Gallery**
617 West Ave.
Bowl, 1969, by Rudolf Staffel
- 7 **Leila's Bistro**
700 West Ave.
Still Life with a Ham and a Roemer, about 1631–34, by Willem Claesz. Heda
- 8 **Breslin's Consignment Corner**
719 West Ave.
Gulshan-i 'Ishq (Rose Garden of Love), 1743, made in India
- 9 **Midgard Properties**
215 Old York Rd.
Spring Sale at Bendel's, 1921, by Florine Stettheimer
- 10 **The Drake Tavern**
304 Old York Rd.
At the Moulin Rouge: The Dance, 1890, by Henri de Toulouse-Lautrec
- 11 **Church of Our Savior**
821 Homestead Rd.
Virgin and Child, 1646?, by José Jusepe de Ribera (also called Lo Spagnoletto)
- 12 **Jenkintown Library**
460 Old York Rd.
Sketch for "A Boat Passing a Lock," 1822–24, by John Constable



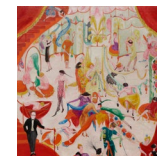
7 William Claesz. Heda



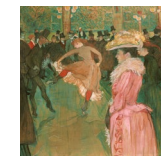
8 *Gulshan-i 'Ishq (Rose Garden of Love)*



9 Florine Stettheimer



10 Henri de Toulouse-Lautrec



11 José Jusepe de Ribera



12 John Constable

