

Visit all of the **Fall 2016** locations

**Brewerytown, Philadelphia**

**Historic Bristol Borough, PA**

**Conshohocken, PA**

**Jenkintown, PA**

**Phoenixville, PA**

**Upper Darby, PA**

**Philadelphia Museum of Art**  
2600 Benjamin Franklin Parkway  
Philadelphia, PA 19130

*Inside Out* brings full-scale, high-quality replicas of works from the Museum's collection into communities in and around Philadelphia. Since the project began in 2015, the Museum has placed masterpieces in 260 locations throughout 22 communities, inspiring surprising and spontaneous interactions with art in unexpected places.

# Inside**Out**

Phoenixville

Fall 2016



Join the Conversation



[philamuseum.org/insideout](http://philamuseum.org/insideout)  
[#artinsideout](https://twitter.com/artinsideout)

Illustrations by Stephen Powers. All details of artwork shown here are from the collection of the Philadelphia Museum of Art. 1: The Mr. and Mrs. Carroll S. Tyson, Jr., Collection, 1963-116-9; 2: The Louise and Walter Arensberg Collection, 1950-134.4 © 2016 Artists Rights Society (ARS), New York/ADAGP, Paris; 3: The Mr. and Mrs. Carroll S. Tyson, Jr., Collection, 1963-116-19; 4: Gift of Henry F. du Pont and Mrs. John Wintersteen, 1959-102-1 © Andrew Wyeth; 5: The Ella King Torrey Collection of African American Quilts, 2006-163-11; 6: John G. Johnson Collection, cat. 599; 7: The Louise and Walter Arensberg Collection, 1950-134-36 © 2016 Artists Rights Society (ARS), New York/ADAGP, Paris; 8: Bequest of Lisa Norris Elkins, 1950-92-12; 9: Bequest of Anne Thomson in memory of her father, Frank Thomson, and her mother, Mary Elizabeth Clarke Thomson, 1954-66-8; 10: Gift of Mr. and Mrs. Herbert Cameron Morris, 1943-46-2 © 2016 Banco de México Diego Rivera Frida Kahlo Museums Trust, Mexico, D.F./Artists Rights Society (ARS), New York; 11: The George W. Elkins Collection, E1936-1-1.

Free admission weekend for *Inside Out* community residents, Sept. 16–18.  
Check the website for details.

Inside Out is generously supported by the John S. and James L. Knight Foundation.

Special thanks to H&G Sign Co. and Krain Outdoor Advertising for providing assistance with artwork reproductions, offering access throughout Philadelphia.

**K** Knight Foundation

Philadelphia Museum of **Art**

Philadelphia Museum of **Art**

# Phoenixville

## Fall 2016



1 Édouard Manet



2 Constantin Brancusi



3 Vincent van Gogh



4 Andrew Newell Wyeth



5 Sarah Mary Taylor

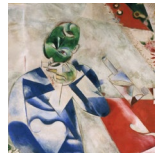


6 Pieter Jansz. Saenredam

- 1 **Phoenixville Borough Hall**  
351 Bridge St.  
*Le Bon Bock*, 1873, by Édouard Manet
- 2 **Phoenixville Foundry**  
2 N Main St.  
*The Kiss*, 1916, by Constantin Brancusi
- 3 **Balder Park**  
126 Bridge St.  
*Sunflowers*, 1888 or 1889, by Vincent van Gogh
- 4 **Bank Street**  
9 Bank St.  
*Groundhog Day*, 1959, by Andrew Newell Wyeth
- 5 **Phoenixville Farmers' Market**  
Gay St. Bridge  
*"Hands" Quilt*, winter 1980, by Sarah Mary Taylor
- 6 **Historical Society of Phoenixville**  
204 Church St.  
*Interior of Saint Bavo*, Haarlem, 1631, by Pieter Jansz. Saenredam
- 7 **Phoenixville Regional Chamber of Commerce Lot**  
173 Bridge St.  
*Half-Past Three (The Poet)*, 1911, by Marc Chagall
- 8 **Soltane Bridges Café & Bakery**  
138 Bridge St.  
*Fair on a Sunny Afternoon, Dieppe*, 1901, by Camille Pissarro
- 9 **Schuylkill River Trail**  
Ashland St.  
*Poplars on the Bank of the Epte River*, 1891, by Claude Monet
- 10 **Buhos Latin Fusion & Bar**  
101 Bridge St.  
*Sugar Cane*, 1931, by Diego Rivera
- 11 **Corner of Main & Bridge Sts.**  
*Mont Sainte-Victoire*, 1902–4, by Paul Cézanne



7 Marc Chagall



8 Camille Pissarro



9 Claude Monet



10 Diego Rivera



11 Paul Cézanne

