

Visit all of the **Fall 2016** locations

**Brewerytown, Philadelphia**

**Historic Bristol Borough, PA**

**Conshohocken, PA**

**Jenkintown, PA**

**Phoenixville, PA**

**Upper Darby, PA**

**Philadelphia Museum of Art**  
2600 Benjamin Franklin Parkway  
Philadelphia, PA 19130

*Inside Out* brings full-scale, high-quality replicas of works from the Museum's collection into communities in and around Philadelphia. Since the project began in 2015, the Museum has placed masterpieces in 260 locations throughout 22 communities, inspiring surprising and spontaneous interactions with art in unexpected places.

# Inside**Out**

Upper Darby  
Fall 2016



Join the Conversation



[philamuseum.org/insideout](http://philamuseum.org/insideout)  
[#artinsideout](https://twitter.com/artinsideout)

Illustrations by Stephen Powers. All details of artwork shown here are from the collection of the Philadelphia Museum of Art. 1: The George W. Elkins Collection, E1924-4-1; 2: 125th Anniversary Acquisition. Purchased with funds contributed by The Daniel W. Dietrich Foundation in memory of Joseph C. Bailey and with a grant from The Judith Rothschild Foundation, 1998-3-1; 3: John G. Johnson Collection, cat. 1051; 4: The John Howard McFadden Collection, M1928-1-41; 5: The Louise and Walter Arensberg Collection, 1950-134-112 © 2016 Artists Rights Society (ARS) New York; 6: Gift of the Philadelphia Chapter, National Home Fashions League, Inc., 1970-86-3; 7: John G. Johnson Collection, cat. 644; 8: The Philip S. Collins Collection, gift of Mrs. Philip S. Collins in memory of her husband, 1945-65-22; 9: Gift of Miss Etie Stettheimer, 1951-27-1; 10: The Henry P. McIlhenny Collection in memory of Frances P. McIlhenny, 1986-26-32.

Free admission weekend for *Inside Out* community residents, Sept. 16–18.  
Check the website for details.

*Inside Out* is generously supported by the John S. and James L. Knight Foundation.

Special thanks to H&G Sign Co. and Krain Outdoor Advertising for providing assistance with artwork reproductions, offering access throughout Philadelphia.

**KF Knight Foundation**

Philadelphia Museum of **Art**

Philadelphia Museum of **Art**

# Upper Darby

## Fall 2016



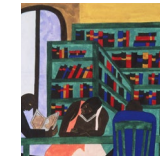
1 Robert Rauschenberg



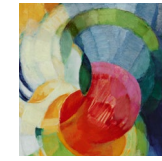
2 Kano Hōgai



3 Thomas Moran



4 Jacob Lawrence



5 František Kupka

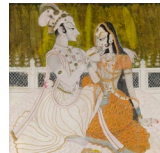


6 Canaletto

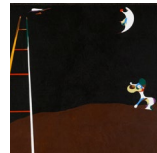
- 1 **69th Street Transportation Center**  
S 69th & Market Sts.  
Estate, 1963, by Robert Rauschenberg
- 2 **69th St Shopping Center**  
101 S 69th St.  
*Two Dragons <in Clouds>*, 1885, by Kano Hōgai
- 3 **Upper Darby Township Municipal Building**  
100 Garrett Ave.  
*Grand Canyon of the Colorado River*, 1892 and 1908, by Thomas Moran
- 4 **Upper Darby Free Library Municipal Branch**  
1400 Bywood Ave.  
*The Libraries Are Appreciated*, 1943, by Jacob Lawrence
- 5 **Beverly Hills Middle School**  
1400 Garrett Rd.  
*Disks of Newton (Study for "Fugue in Two Colors")*, 1912, by František Kupka
- 6 **Dermond Circle**  
1105 Dermond Rd.  
*The Bucintoro at the Molo on Ascension Day*, about 1745, by Canaletto
- 7 **Upper Darby High School**  
601 N Lansdowne Ave.  
*Krishna and Radha*, about 1750, made in India
- 8 **Garrettford Elementary School**  
3830 Garrett Rd.  
*Dog Barking at the Moon*, 1926, By Joan Miró
- 9 **Upper Darby School Administration Building**  
4611 Bond Ave.  
*Newport Coast*, 1902, by William Trost Richards
- 10 **Westbrook Park Elementary School**  
199 Westbrook Dr.  
*Noah's Ark*, 1846, by Edward Hicks



7 *Krishna and Radha*



8 Joan Miró



9 William Trost Richards



10 Edward Hicks

