

Coatesville

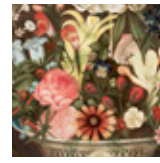
- 1 Chester Valley Bank**
Lincoln Hwy. E & S 1st Ave.
Field Armor, about 1550, made in Germany
- 2 Coatesville Savings Bank**
185 Lincoln Hwy. E
Portrait of Master Bunbury, 1780–81, by Sir Joshua Reynolds
- 3 Gazebo Square**
218 Lincoln Hwy. E
From Nature in the Garden, 1856, by Rubens Peale
- 4 Lincoln Ave. Parking Lot**
259 Lincoln Hwy.
Sketch for "A Boat Passing a Lock," 1822–24, by John Constable
- 5 Ash Park**
300 Kersey St.
Water Mill, 1892, by Frits Thaulow
- 6 Coatesville Area Public Library**
501 Lincoln Hwy.
Gulshan-i 'Ishq (Rose Garden of Love), 1743, made in India
- 7 Art Partners Studio**
545 Lincoln Hwy. E
Manne-Porte, Étretat, 1885, by Claude Monet
- 8 Paul Palmer Park**
9th & Chestnut Sts.
The Japanese Footbridge and the Water Lily Pool, Giverny, 1899, by Claude Monet
- 9 Scott Middle School**
800 Olive St.
Present Futures, 2006, by Moe Brooker



1 *Field Armor*



2 *Sir Joshua Reynolds*



3 *Rubens Peale*



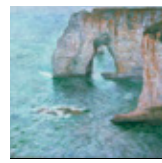
4 *John Constable*



5 *Frits Thaulow*



6 *Gulshan-i 'Ishq (Rose Garden of Love)*



7 *Claude Monet*



InsideOut
Spring 2016

8 Claude Monet



9 Moe Brooker



#artinsideout
philamuseum.org/insideout

All details of artwork shown here are from the collection of the Philadelphia Museum of Art. Bequest of Carl Otto Kretschmar von Kienbusch, 1977-167-4; The John Howard McFadden Collection, M1928-1-29; Purchased with funds contributed by Marion Boulton Stroud, 2006-149-1; Gift of the McNeil Americana Collection, 2010-70-3; John G. Johnson Collection, cat. 1091; The Philip S. Collins Collection, gift of Mrs. Philip S. Collins in memory of her husband, 1965-65-22; John G. Johnson Collection, cat. 1051; The John Howard McFadden Collection, M1928-1-2; The Mr. and Mrs. Carroll S. Tyson, Jr., Collection, 1963-116-11.

Inside Out is generously supported by the John S. and James L. Knight Foundation.

Special thanks to H&G Sign Co. and Krain Outdoor Advertising for providing assistance with artwork reproductions, offering access throughout Philadelphia.

K Knight Foundation

Philadelphia
Museum of Art