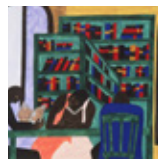


# Tacony

- 1 Free Library of Philadelphia – Tacony Branch**  
6742 Torresdale Ave.  
*The Libraries Are Appreciated*, 1943, by Jacob Lawrence
- 2 Dr. David Cohen, Chiropractor**  
6806 Torresdale Ave.  
*Newport Coast*, 1902, by William Trost Richards
- 3 Diston Recreation Center**  
4510 Disston St.  
*Girl in a Red Ruff*, about 1896, by Pierre-Auguste Renoir
- 4 FM Mart**  
6900 Torresdale Ave.  
*Still Life with a Ham and a Roemer*, about 1631–34, by Willem Claesz. Heda
- 5 Marie Huff Hairdressing**  
6934 Torresdale Ave.  
*Portrait of a Roman Lady (La Nanna)*, 1859, by Sir Frederic Leighton
- 6 DeNofa's**  
6946 Torresdale Ave.  
*The Bucintoro at the Molo on Ascension Day*, about 1745, by Canaletto
- 7 Curran's Irish Inn**  
6900 State Rd.  
*At the Moulin Rouge: The Dance*, 1890, by Henri de Toulouse-Lautrec
- 8 Holy Innocents St. Paul's Church**  
7001 Torresdale Ave.  
*Marine*, about 1652–53, by Simon Jacobsz. de Vlieger
- 9 Sannutti Funeral Home**  
7103 Torresdale Ave.  
*Sailboats Racing on the Delaware*, 1874, by Thomas Eakins
- 10 SawTown Tavern**  
4717 Princeton St.  
*Jackie (Four Jackies) (Portraits of Mrs. Jacqueline Kennedy)*, 1964, by Andy Warhol



1 Jacob Lawrence



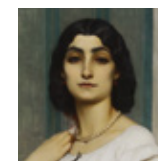
2 William Trost Richards



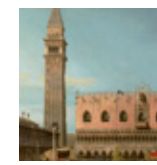
3 Pierre-Auguste Renoir



4 Willem Claesz. Heda



5 Sir Frederic Leighton



6 Canaletto

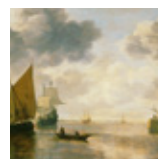


7 Henri de Toulouse-Lautrec



InsideOut  
Spring 2016

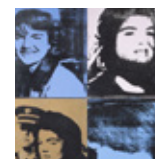
8 Simon Jacobsz. de Vlieger



9 Thomas Eakins



10 Andy Warhol



#artinsideout  
philamuseum.org/insideout

All details of artwork shown here are from the collection of the Philadelphia Museum of Art. The Louis E. Stern Collection, 1963-181-40 © 2016 The Jacob and Gwendolyn Knight Lawrence Foundation, Seattle/Artists Rights Society (ARS), New York; Gift of Marguerite and Gerry Lenfest, 2013-58-1; Request of Charlotte Dorrance Wright, 1978-128; John G. Johnson Collection, cat. 644; The William L. Ekins Collection, E1924-3-48; Purchased with the Henry Clifford Memorial Fund, 1926-34-1; The Henry P. McIlhenny Collection in memory of Frances P. McIlhenny, 1986-26-32; John G. Johnson Collection, cat. 593; Gift of Mrs. Thomas Eakins and Miss Mary Adeline Williams, 1929-184-28; Gift of Mrs. H. Gates Lloyd, 1966-57-1-4 © 2016 The Andy Warhol Foundation for the Visual Arts, Inc./Artists Rights Society (ARS), New York.

Inside Out is generously supported by the John S. and James L. Knight Foundation.

Special thanks to H&G Sign Co. and Krain Outdoor Advertising for providing assistance with artwork reproductions, offering access throughout Philadelphia.

**KF Knight Foundation**

Philadelphia  
Museum of Art